

dSEA



UNIVERSITÀ
DEGLI STUDI
DI PADOVA

ERASMUS: GUIDELINES

Erasmus Call 2018-2019

DSEA INTERNATIONAL OFFICE

Dott.ssa Giovanna De Angelis

Dott.ssa Elisabetta Zanaga

Dott.ssa Greta Pesce

Dr Elisabetta Lodigiani

Dr Amedeo Pugliese

– Services Coordinator

–Senior Officer

–Officer

- Deputy Dean to Erasmus Exchanges

– AD to Int Rel

Where:

via Ugo Bassi 1, 5 Floor

Monday-Friday 10-12

e-mail: international.economia@unipd.it

FOUR PARTIES INVOLVED

1. Exchange Student

You!

3. International Office @ UniPD

- June 2018: **signature of your Erasmus Agreement**
- At most 10 days after you return: hand in your Erasmus Stay Certificate (Provided by Home Uni)

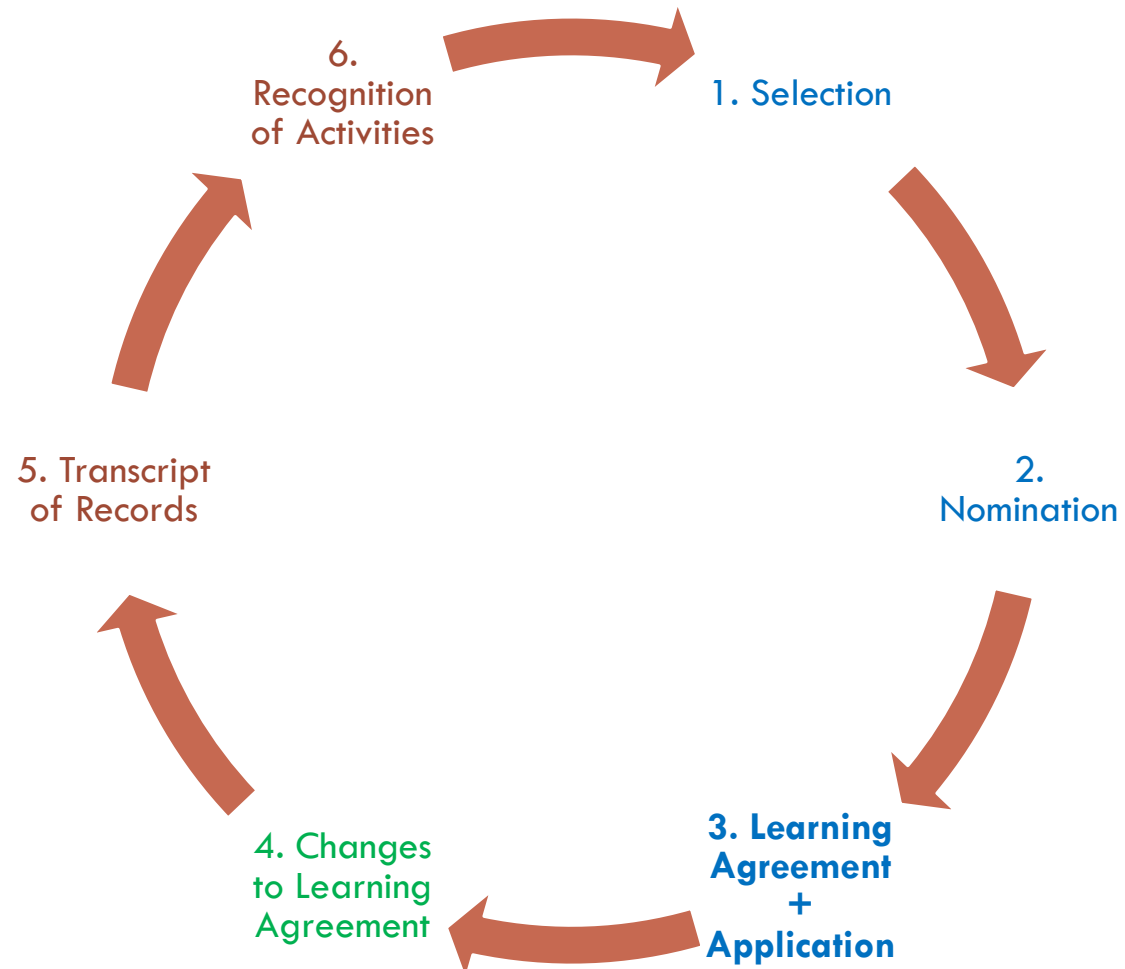
2. International Office @dSEA

- LA approval
- LA changes

4. Host University

- LA
- Final Transcript of Records

STEP-BY-STEP



LEARNING AGREEMENT - UNIWEB

Your LA represents

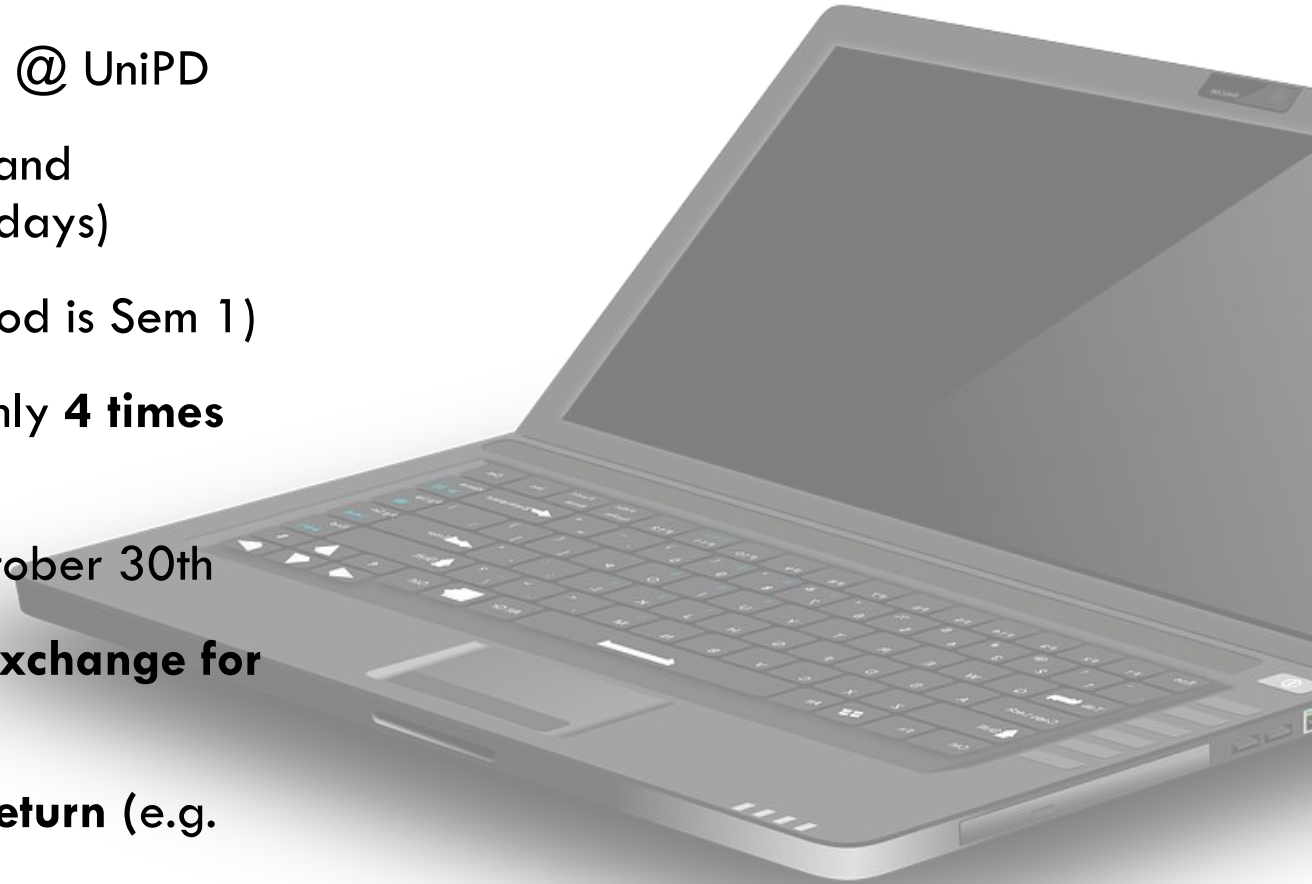
- your study plan during the exchange period &
- defines the recognition of the activities upon your return @ UniPD

It is important and it requires precision and attention!

1. Start by becoming acquainted with courses & subjects offered by the Host Institution
2. Check the timing (semester of offer), content and pre-requisites to ensure the subject is feasible
3. Find a suitable match with the courses you would have taken if you stayed in Padova

LEARNING AGREEMENT - UNIWEB

- 1 ECTS at your Host University corresponds to 1 ECTS @ UniPD
- The Erasmus Coordinator (Prof Lodigiani) will review and approve/reject LAs in Uniweb once per week (on Tuesdays)
- LA must be approved by May 10th (if exchange period is Sem 1)
- You are allowed to edit/change your LA in Uniweb only **4 times from your departure until your return**: be careful!
- You are entitled to one amendment to your LA by October 30th
- **No other change is allowed (except if you are on exchange for a full year)**
- **We will not accept changes to your LA upon your return (e.g. reshuffling of matches)**



LEARNING AGREEMENT - UNIWEB

How to find suitable matches?

Host Universities will not necessarily offer courses that are exact matches of what it is in your **current study plan @ UniPD**

We allow some degree of freedom, but please ensure that:

Course @ Host

Business/ Management
Finance / Economics
Economics/ Quantitative
Statistics/ Maths / Quant

Course @ UniPD

-> Business/ Management
-> Finance/ Business/ Eco
-> Economics
-> Stats / Math / Quant

LEARNING AGREEMENT - UNIWEB

Instruction manual – user guide available at the following link:

<http://www.unipd.it/compilazione-consegna-learning-agreement>

LEARNING AGREEMENT -

- You can match multiple courses/subjects at the Host Uni to one subject @ UniPD

| Match | Exam Host University | ECTS | Exam in UniPD | ECTS |
|-------|-----------------------------------|------|-------------------------------|------|
| 1 | Intermediate Financial Accounting | 6 | Advanced Financial Accounting | 12 |
| | Advanced Financial Accounting | 6 | | |

- You can match one course/subject at the Host Uni to multiple subjects @ UniPD

| Match | Exam Partner University | ECTS | Exam in UniPD | ECTS |
|-------|-------------------------|------|---------------------------------|------|
| 2 | Banking and Finance | 12 | Economia Intemediari Finanziari | 6 |
| | | | Money and Banking | 6 |

LA – COMMON MISTAKES

| Match | Exam Partner University | ECTS | Exam in UniPD | ECTS |
|-------|-----------------------------------|------|---------------------------------|------|
| 1 | Intermediate Financial Accounting | 6 | Advanced Financial Accounting | 12 |
| 1 | Advanced Financial Accounting | 4 | | |
| 2 | International Taxation Law | 9 | International Financial Markets | 9 |

LA – COMMON MISTAKES

| Match | Exam Partner University | ECTS | Exam in UniPD | ECTS |
|-------|-------------------------|------|----------------------------|------|
| 1 | Marketing Methods | 5 | Advanced Corporate Finance | 9 |
| 1 | Financial Markers | 4 | | |

Content mis-match:

Finance + Marketing does not equate Advanced Corporate Finance

| Match | Exam Partner University | ECTS | Exam in UniPD | ECTS |
|-------|--|------|----------------------------|------|
| 1 | Quantitative Methods in Financial Industries | 5 | Advanced Corporate Finance | 9 |
| 1 | Financial Markers | 4 | | |



LA – COMMON MISTAKES

| Match | Exam Partner University | ECTS | Exam in UniPD | ECTS |
|-------|-----------------------------------|------|---------------------------------|------|
| 1 | Intermediate Financial Accounting | 6 | Advanced Financial Accounting | 12 |
| | Advanced Financial Accounting | 4 | | |
| | International Taxation Law | 9 | International Financial Markets | 9 |
| | Advanced Marketing | 8 | Advanced Marketing | 6 |

Total amount of ECTS is the same but matches are not clearly expressed
Please, use the box dedicated to annotations

LA – COMMON MISTAKES

Language courses or Induction/Welcome Courses* can only be matched to '**attività libere**' not to **compulsory courses in UniPD**

Excess credits at the Host Institution must not be associated to any subject @ UniPD

→ PAY ATTENTION!

TAF D = crediti liberi non associabili

*cannot be recognized among the 12 elective courses needed to get the final diploma

LA – YOUR BENCHMARK... TO MAKE US HAPPY!

| Match | Exam Partner University | ECTS | Exam in UniPD | ECTS |
|-------|-----------------------------------|-----------|-------------------------------|---------------|
| 1 | Intermediate Financial Accounting | 6 | Advanced Financial Accounting | 12 |
| 1 | Advanced Financial Accounting | 4 | | |
| 2 | International Taxation Law | 9 | International Taxation Law | 9 |
| 3 | Advanced Marketing | 8 | Advanced Marketing | 6 |
| 4 | Advanced Corporate Finance | 10 | Advanced Corporate Finance | 8 |
| | Dutch Language | 2 | | |
| | TOT | 39 | TOT | 35 + 4 |

Notes:

#1 I intend to use 2 ECTS in excess from association 4 to integrate association 1

#2 I intend to use 2 ECTS in excess from association 3 as free credits

#3 I intend to use 2 ECTS of Dutch language as free credits

RECOGNITION OF ACTIVITIES AND MARKS

ECTS Conversion Table

| ECTS | UniPD |
|------|-------|
| A | 30 |
| B | 28-29 |
| C | 25-27 |
| D | 22-24 |
| E | 18-21 |
| Fail | Fail |

CALENDAR: UPLOAD YOUR LA IN UNIWEB (1ST SEMESTER DEPARTURES)

| | | Application Window |
|---------|--|--------------------|
| Group 1 | Sweden Finland Norway Belgium UK Lithuania | 26/3 - 3/4 |
| Group 2 | Germany France Austria The Netherlands Luxemburg | 9/4- 23/4 |
| Group 3 | Portugal Spain Poland Slovakia Croatia Czech Republic | 30/4 - 7/5 |

Please do not upload your LA on Uniweb prior or after the application window.

The process is designed to ensure accuracy and speed in the evaluation and approval of LA prior to your application to the Host University

CLA: UNIPD LINGUISTIC CENTRE

CLA offers free intensive courses (French, English, Portuguese, Spanish, German) for outgoing Erasmus students (30hrs)

Enrollment deadline: to be defined

CLA also offers the opportunity to do a test in order to get a language level certificate (March 22 first intake).

For more information: <http://cla.unipd.it/attivita/corsi/erasmus-out/>

ERASMUS CONTRACT

WHEN? WHERE?

June 2018 (date&location to be defined)

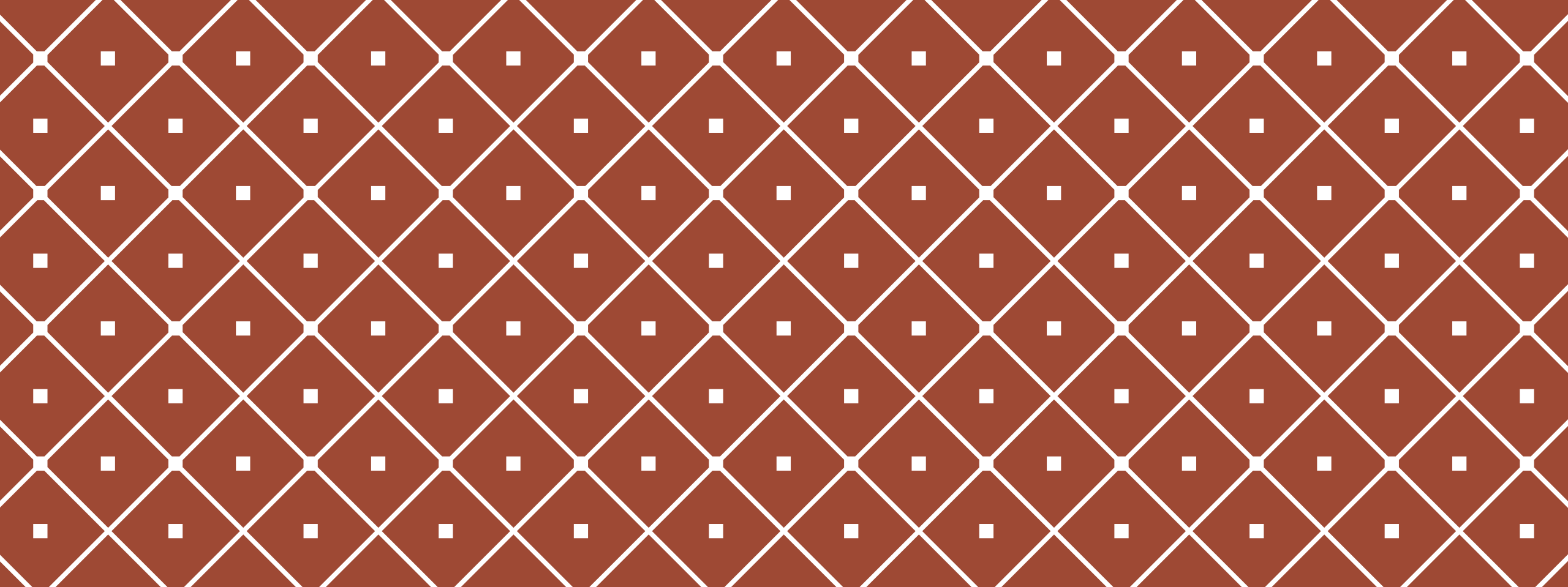
WHAT?

Signature of the Erasmus+ contract in order to obtain the Erasmus+ status& scholarship.



GOLDEN RULES

- The email address for every queries is international.economia@unipd.it
- For issues related to study plan and learning agreements:
international.economia@unipd.it
- Do not expect responses to emails sent to personal addresses
- Last-minute emails will be treated as any other email: pre-plan according to the deadlines



THANKS FOR YOUR ATTENTION!

*DSEA International Office
Staff*